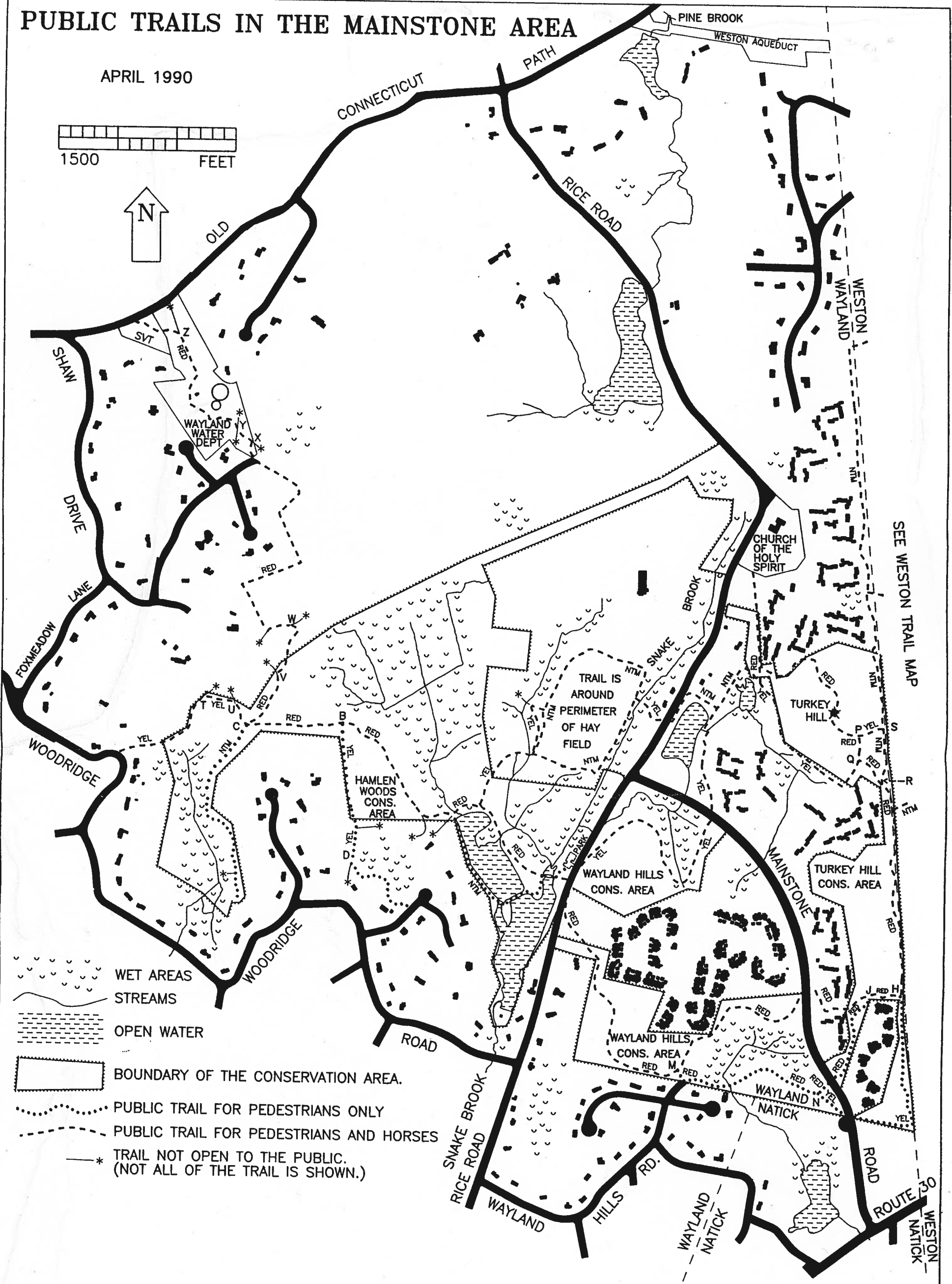
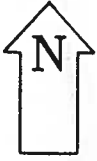
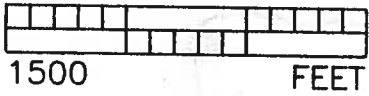


PUBLIC TRAILS IN THE MAINSTONE AREA

APRIL 1990



- WET AREAS
- STREAMS
- OPEN WATER
- BOUNDARY OF THE CONSERVATION AREA.
- PUBLIC TRAIL FOR PEDESTRIANS ONLY
- PUBLIC TRAIL FOR PEDESTRIANS AND HORSES
- TRAIL NOT OPEN TO THE PUBLIC. (NOT ALL OF THE TRAIL IS SHOWN.)

TRAIL-MARKER COLORS ARE INDICATED BY LABELS ON THIS MAP: "YEL" FOR YELLOW MARKERS, "RED" FOR RED OR ORANGE MARKERS, AND "NTM" FOR TRAILS WHICH DO NOT HAVE TRAIL MARKERS.

AS AN AID TO ORIENTATION, SOME TRAIL INTERSECTIONS ARE MARKED WITH A LETTER BOTH ON THIS MAP AND ON A SMALL SIGN MOUNTED NEAR THE ACTUAL INTERSECTION.

THE PARKING LOT ON RICE ROAD NORTH OF THE RESERVOIR IS RESERVED FOR USERS OF THESE TRAILS AND CONSERVATION AREAS. PARKING IS ALSO ALLOWED AT THE CHURCH OF THE HOLY SPIRIT, EXCEPT ON SUNDAY MORNINGS. ON-STREET PARKING AT TRAIL-HEADS IS STRONGLY DISCOURAGED.

SEE WESTON TRAIL MAP